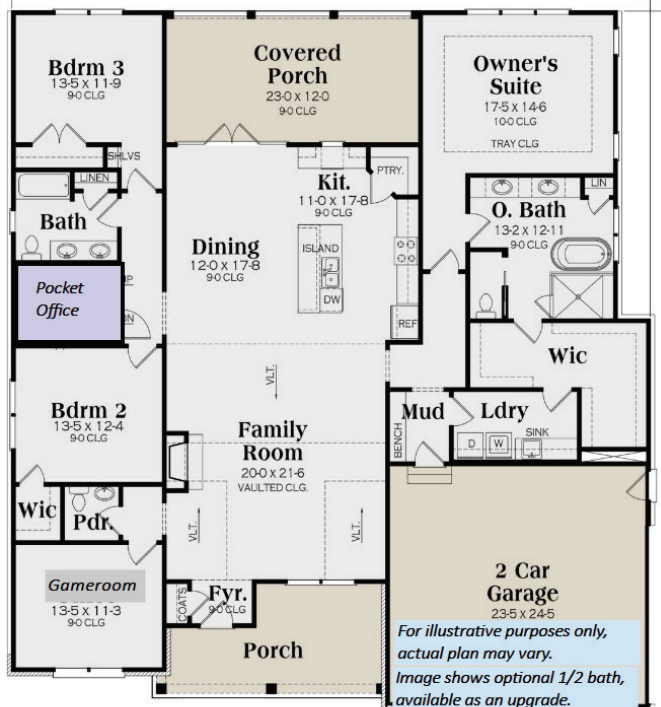


STATELY FARMHOUSE 2534



Floorplan for illustrative purposes only, actual plan may vary.

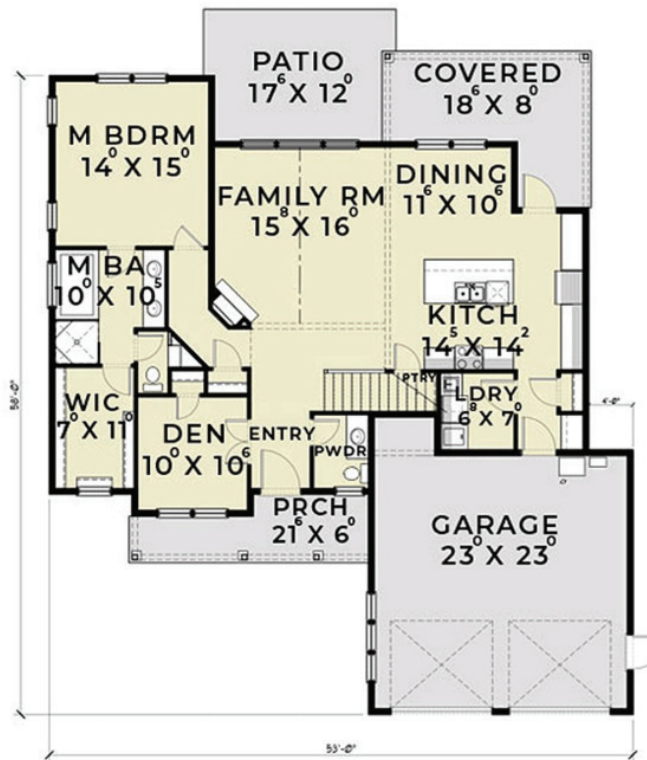
FEATURES INCLUDE:

- 3 or 4 bedrooms / 2.5 bathrooms / 2 car garage
- 2,534 square feet
- This plan has everything you want, and on a single story including split bedrooms and an oversized master suite
- Great room features vaulted ceiling with clearstory windows and stained beams
- Four bedrooms with an office
- Large covered front and rear porches
- This home is as impressive as it is livable
- Four bedrooms (or three bedrooms with a game room) and an office



Renderings may show modified designs.

DOUBLE STACK FARMHOUSE 2346



Floorplan for illustrative purposes only, actual plan may vary.

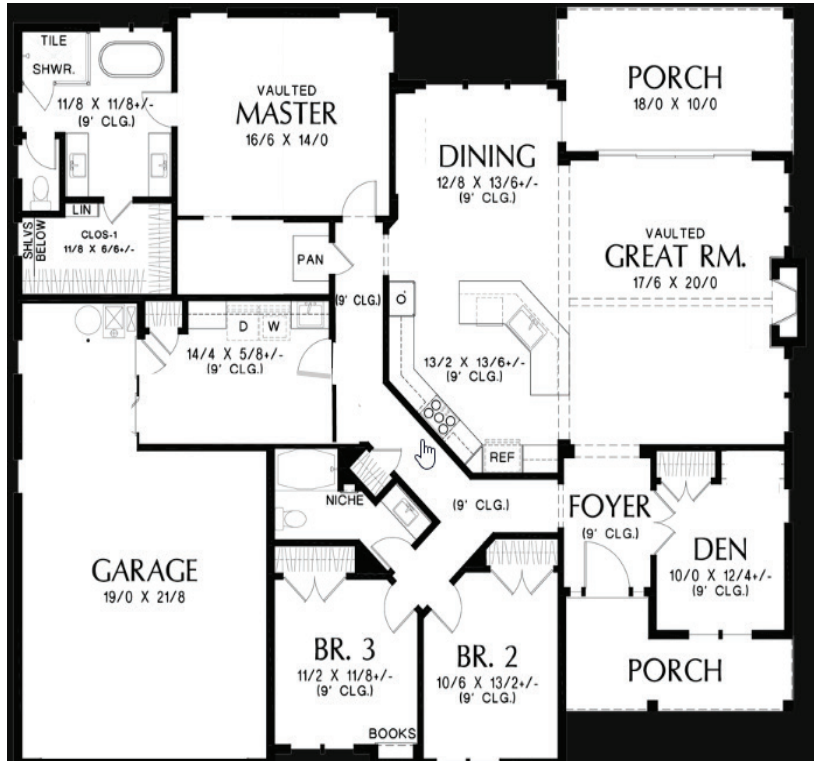
FEATURES INCLUDE:

- 3 or 4 bedrooms / 2.5 bathrooms / 2 car garage
- 2,346 square feet
- Features beautiful open concept Great Room with soaring ceilings and double stacked windows
- Two story living room features optional Juliette balcony
- Oversized game room upstairs along with two bedrooms gives kids their own space
- Grand appearance and curb appeal
- This home is sure to be the spot for parties and entertaining with its kitchen and great room flowing perfectly to its covered back porch
- Den can be used as a 4th bedroom.



Renderings may show modified designs.

CONTEMPORARY CRAFTSMAN 2275



Floorplan for illustrative purposes only, actual plan may vary.

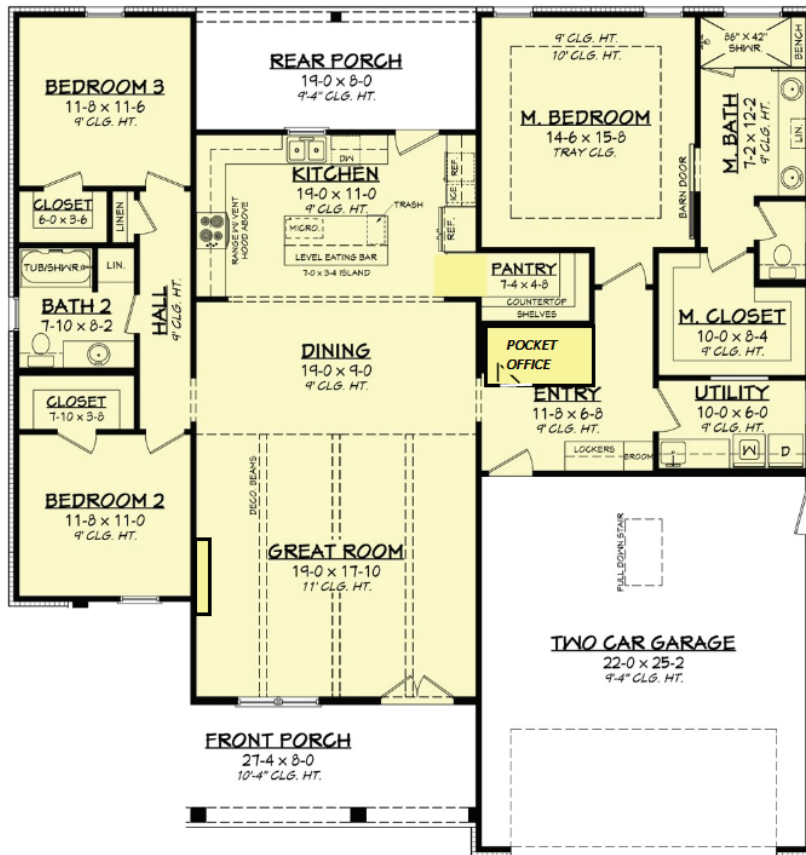
FEATURES INCLUDE:

- 3 or 4 bedrooms / 2 bathrooms / 2 car garage
- 2,275 square feet
- Kitchen features large island which faces both the living and dining areas
- Great room with soaring vaulted ceiling and stained beam
- Master suite features vaulted ceiling, oversized dual vanities, over-sized shower and freestanding tub
- Large back porch
- This home has great curb appeal and has the open spaces to go along with ample storage! Home features den/study.



Renderings may show modified designs.

TRUE TEXAS MODERN FARMHOUSE 2044



Floorplan for illustrative purposes only, actual plan may vary.

FEATURES INCLUDE:

- 3 bedrooms / 2 bathrooms / 2 car garage
- 2,044 square feet
- Connected front to back by the great room, dining and kitchen this home is equally inviting and impressive
- Features large U shaped kitchen with plenty of space for the family
- Master bedroom has large on suite with oversized shower, oversized closet and over-sized connected laundry room
- Pocket office for a perfect work from home setup
- Split secondary bedrooms
- Large porches both front and back

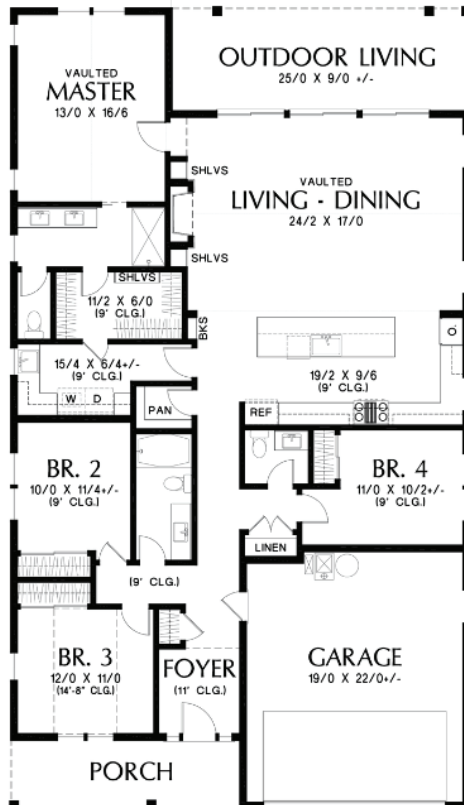


Renderings may show modified designs.

THE DEEP TEXAS 2009



*Image shows optional 1/2 bath,
available as an upgrade.*



*Floorplan for illustrative purposes
only, actual plan may vary.*

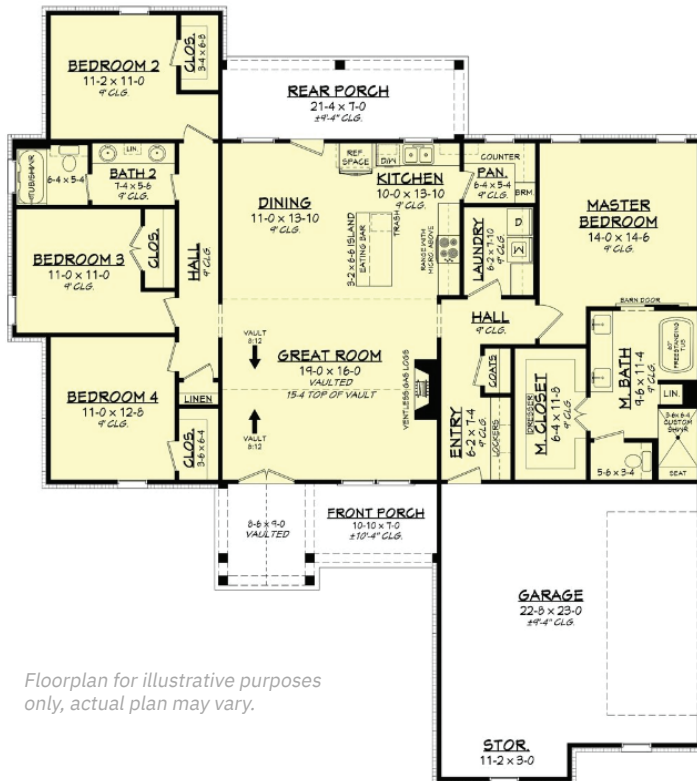
FEATURES INCLUDE:

- 4 bedrooms / 2 or 2.5 bathrooms / 2 car garage
- 2,009 square feet
- This house features the ultimate kitchen with gigantic island and more cabinets and counter space than any other plan
- Great for gathering both inside and out with its large great room and connected outdoor living
- Master suite has a walk-in shower and a pass through from closet to laundry
- Four bedroom or use the front bedroom as a perfect office with its large windows and tall ceilings
- Great curb appeal with high peaked roofline



*Renderings may show
modified designs.*

FAMILY RANCH FARMHOUSE 1992



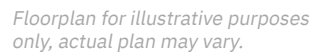
Floorplan for illustrative purposes only, actual plan may vary.

FEATURES INCLUDE:

- 4 bedrooms / 2 bathrooms / 2 car garage
- 1,992 square feet
- With a vaulted great room that is open to the dining and kitchen this home is made for families
- Large and secluded master suite with large master closet, dual vanities, freestanding tub and oversized walk in shower
- Plenty of storage space throughout the home
- Large front and rear porches
- Oversized garage



Renderings may show modified designs.



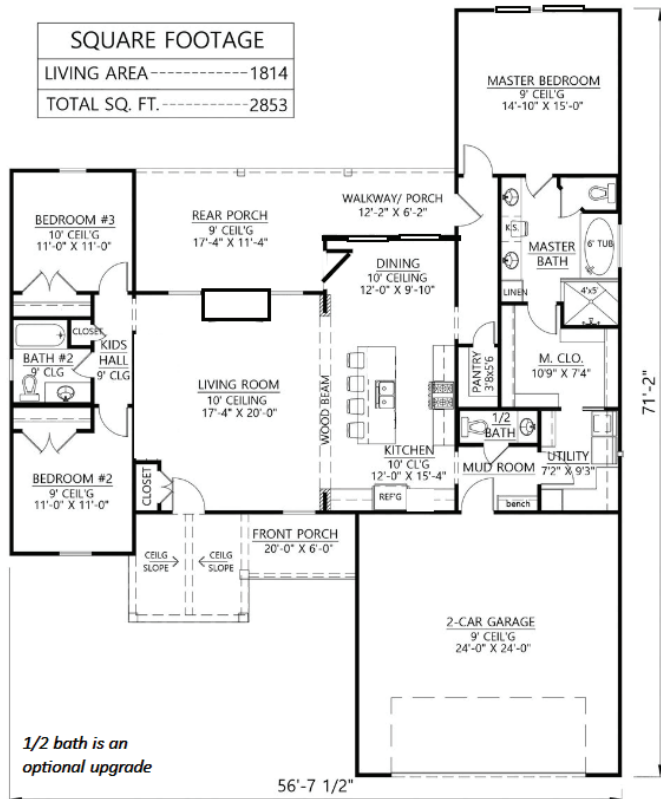
- 4 bedrooms / 2 bathrooms / 2 car garage
- 1,897 square feet
- With a vaulted great room that spans from kitchen to living, this home feels especially grand.
- Large master suite with dual vanities, free standing tub and walk in shower
- Master closet connects to the laundry for easy living
- Features four bedrooms with a double vanity secondary bath
- Large and inviting front porch and a back porch with room for table, chairs and a big ole grill.



Renderings may show modified designs.



THE ORIGINAL FARMHOUSE 1814



Floorplan for illustrative purposes only, actual plan may vary.

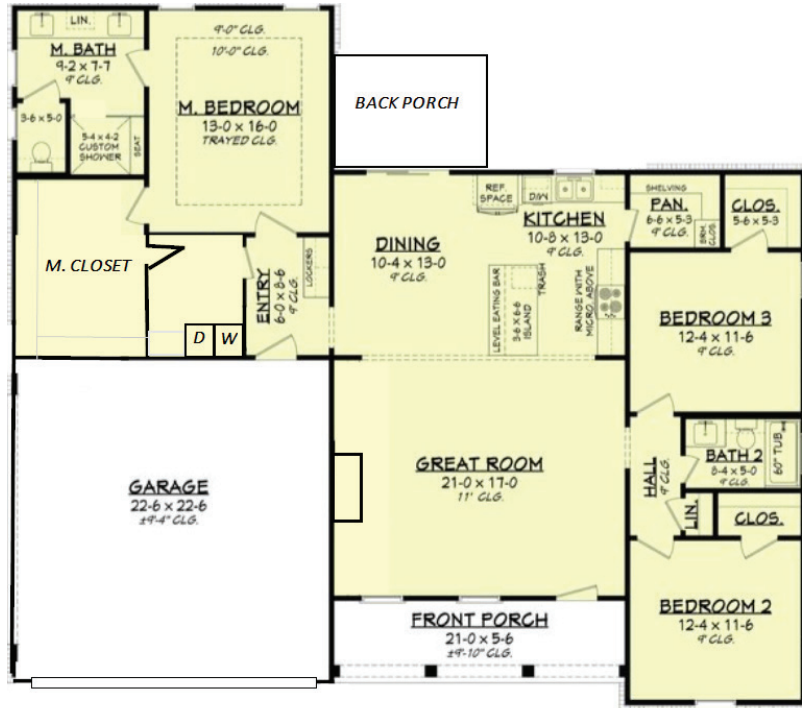
FEATURES INCLUDE:

- 3 bedrooms / 2 or 2.5 bathrooms / 2 car garage
- 1,814 square feet
- With a vaulted front porch and oversized back patio, this home has outdoor space galore
- Large great room with ample kitchen cabinet space
- Master suite with freestanding tub and large walk in shower
- Secondary bedrooms on opposing side of the house
- Oversized garage, perfect for Texas size vehicles large windows and tall ceilings
- Great curb appeal with high peaked roofline



Renderings may show modified designs.

TRUE TEXAS FARMHOUSE 1745



Floorplan for illustrative purposes only, actual plan may vary.

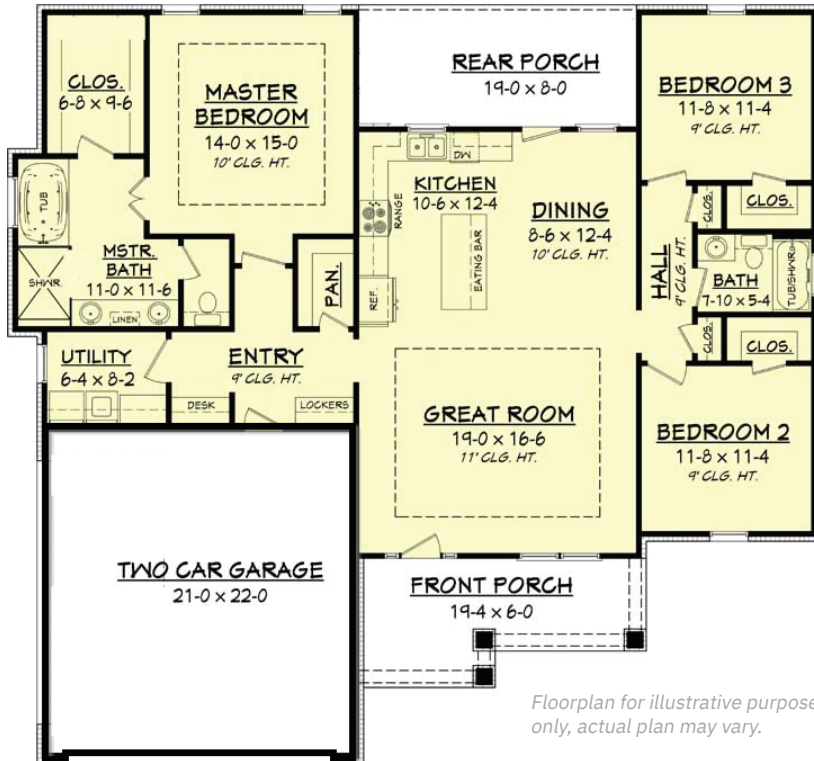
FEATURES INCLUDE:

- 3 bedrooms / 2 bathrooms / 2 car garage
- 1,747 square feet
- Soaring 11' ceilings in the great room with modern electric fireplace makes for a perfect gathering place
- Island kitchen with sink overlooking the back patio to watch the family play outside
- Master suite has oversized shower and dual vanities
- Master closet and laundry room connect to make for easy living
- Front porch that spans the entirety of the great room, perfect for a rocking chair and a glass of iced tea.



Renderings may show modified designs.

TRUE TEXAS CRAFTSMAN 1657



Floorplan for illustrative purposes only, actual plan may vary.

FEATURES INCLUDE:

- 3 bedrooms / 2 bathrooms / 2 car garage
- 1,657 square feet
- Kitchen Features Large Dining Island and Floating Shelves
- Great Room With Recessed Ceiling and Stained Beam
- Master Suite Features Recessed Ceiling, Oversized Dual Vanities, Oversized Shower and Freestanding Tub
- Large Porches to Enjoy Your Texas Evenings, or Mornings
- Open Concept Great Room, Recessed Living with Stained Beams and a Ton of Character.
- Don't let its size fool you, with its oversized porches and large master suite, it's a home for the family and for entertaining friends.



Renderings may show modified designs.