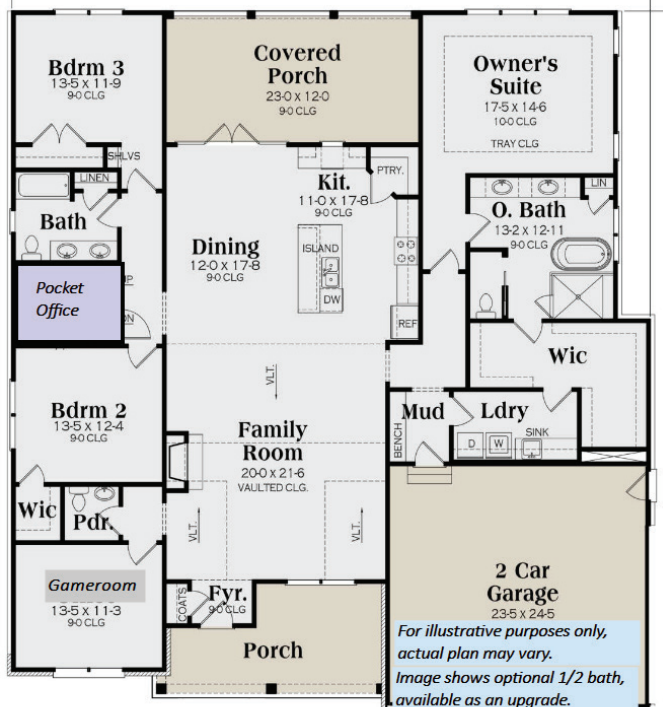


STATELY FARMHOUSE 2534



FEATURES INCLUDE:

- 3 or 4 bedrooms / 2.5 bathrooms / 2 car garage
- 2,534 square feet
- This plan has everything you want, and on a single story including split bedrooms and an oversized master suite
- Great room features vaulted ceiling with clearstory windows and stained beams
- Four bedrooms with an office
- Large covered front and rear porches
- This home is as impressive as it is livable
- Four bedrooms (or three bedrooms with a game room) and an office

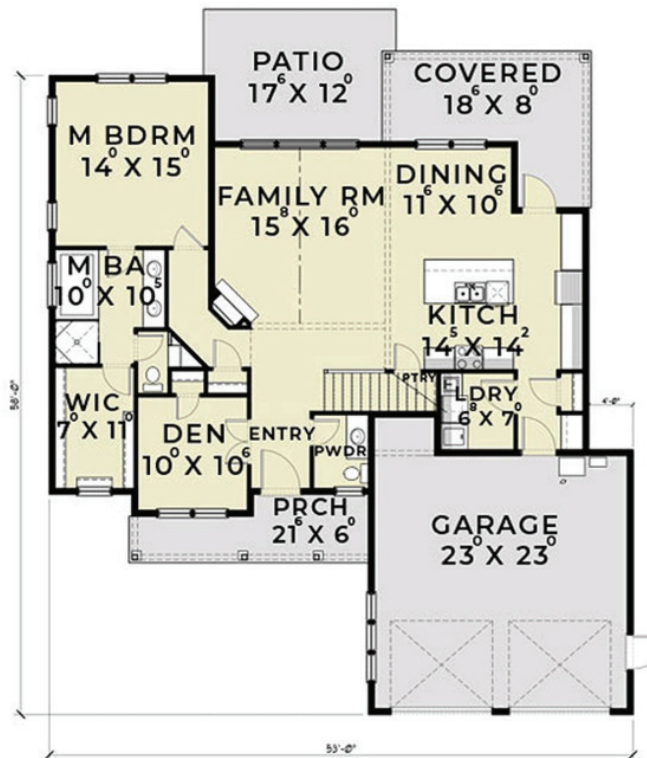


Floorplan for illustrative purposes only, actual plan may vary.



Renderings may show modified designs.

DOUBLE STACK FARMHOUSE 2346



Floorplan for illustrative purposes only, actual plan may vary.

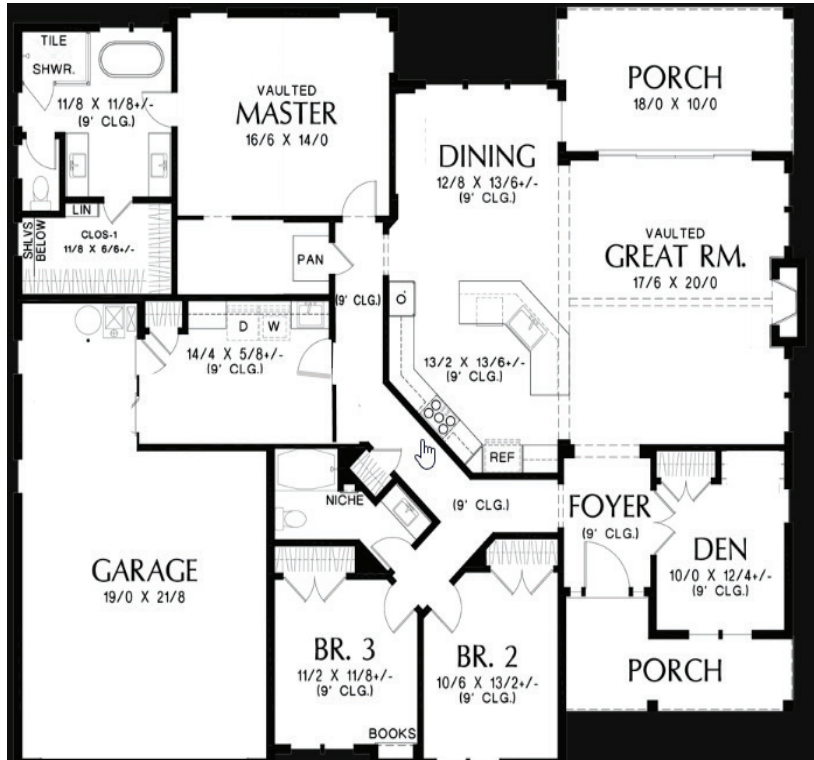
FEATURES INCLUDE:

- 3 or 4 bedrooms / 2.5 bathrooms / 2 car garage
- 2,346 square feet
- Features beautiful open concept Great Room with soaring ceilings and double stacked windows
- Two story living room features optional Juliette balcony
- Oversized game room upstairs along with two bedrooms gives kids their own space
- Grand appearance and curb appeal
- This home is sure to be the spot for parties and entertaining with its kitchen and great room flowing perfectly to its covered back porch
- Den can be used as a 4th bedroom.



Renderings may show modified designs.

CONTEMPORARY CRAFTSMAN 2275



Floorplan for illustrative purposes only, actual plan may vary.

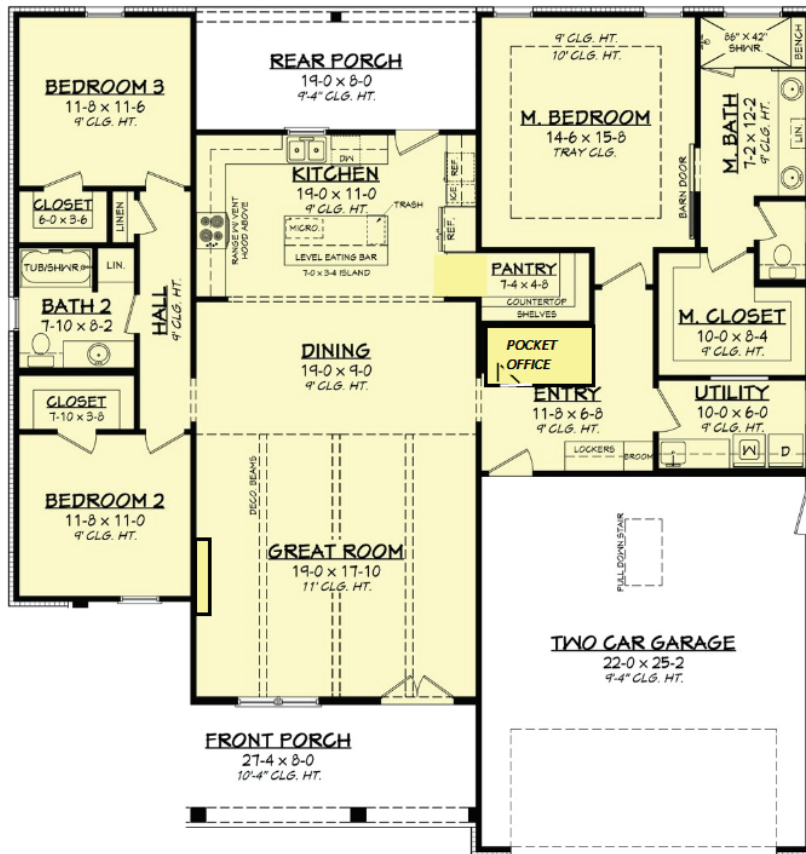
FEATURES INCLUDE:

- 3 or 4 bedrooms / 2 bathrooms / 2 car garage
- 2,275 square feet
- Kitchen features large island which faces both the living and dining areas
- Great room with soaring vaulted ceiling and stained beam
- Master suite features vaulted ceiling, oversized dual vanities, over-sized shower and freestanding tub
- Large back porch
- This home has great curb appeal and has the open spaces to go along with ample storage! Home features den/study.



Renderings may show modified designs.

TRUE TEXAS MODERN FARMHOUSE 2044



Floorplan for illustrative purposes only, actual plan may vary.

FEATURES INCLUDE:

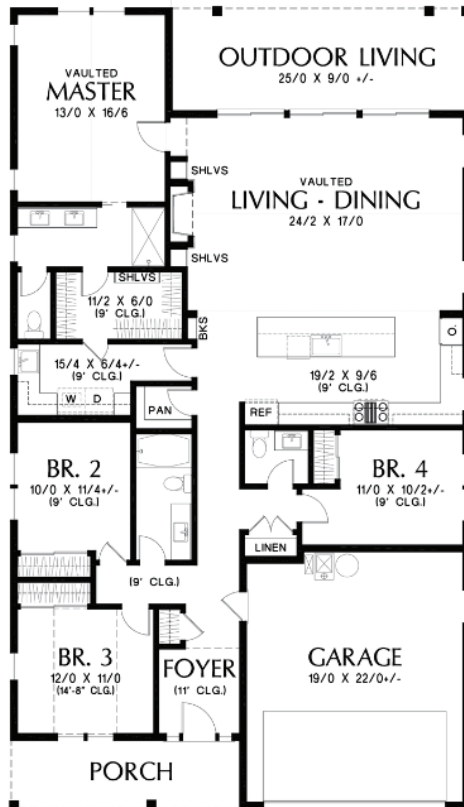
- 3 bedrooms / 2 bathrooms / 2 car garage
- 2,044 square feet
- Connected front to back by the great room, dining and kitchen this home is equally inviting and impressive
- Features large U shaped kitchen with plenty of space for the family
- Master bedroom has large on suite with oversized shower, oversized closet and over-sized connected laundry room
- Pocket office for a perfect work from home setup
- Split secondary bedrooms
- Large porches both front and back



Renderings may show modified designs.

THE DEEP TEXAS 2009

*Image shows optional 1/2 bath,
available as an upgrade.*



*Floorplan for illustrative purposes
only, actual plan may vary.*

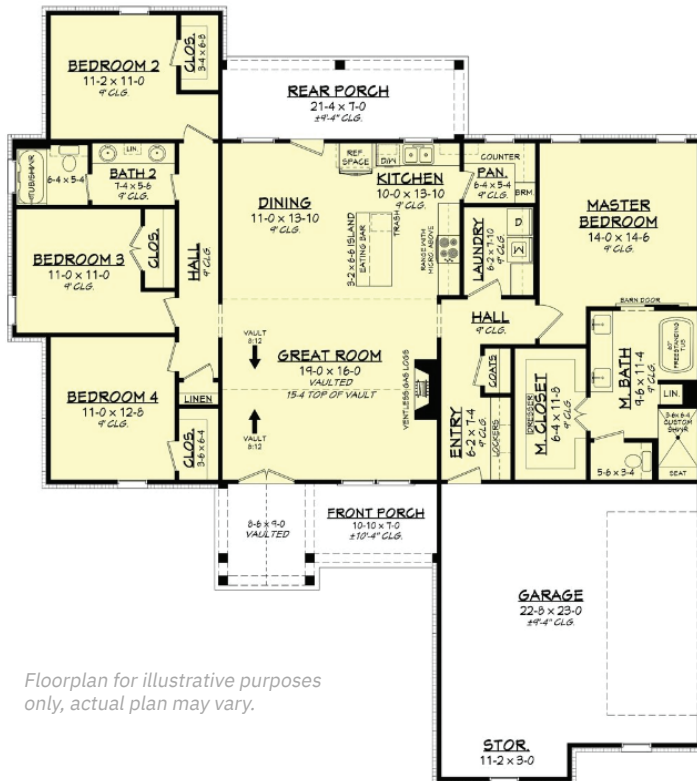
FEATURES INCLUDE:

- 4 bedrooms / 2 or 2.5 bathrooms / 2 car garage
- 2,009 square feet
- This house features the ultimate kitchen with gigantic island and more cabinets and counter space than any other plan
- Great for gathering both inside and out with its large great room and connected outdoor living
- Master suite has a walk-in shower and a pass through from closet to laundry
- Four bedroom or use the front bedroom as a perfect office with its large windows and tall ceilings
- Great curb appeal with high peaked roofline



*Renderings may show
modified designs.*

FAMILY RANCH FARMHOUSE 1992



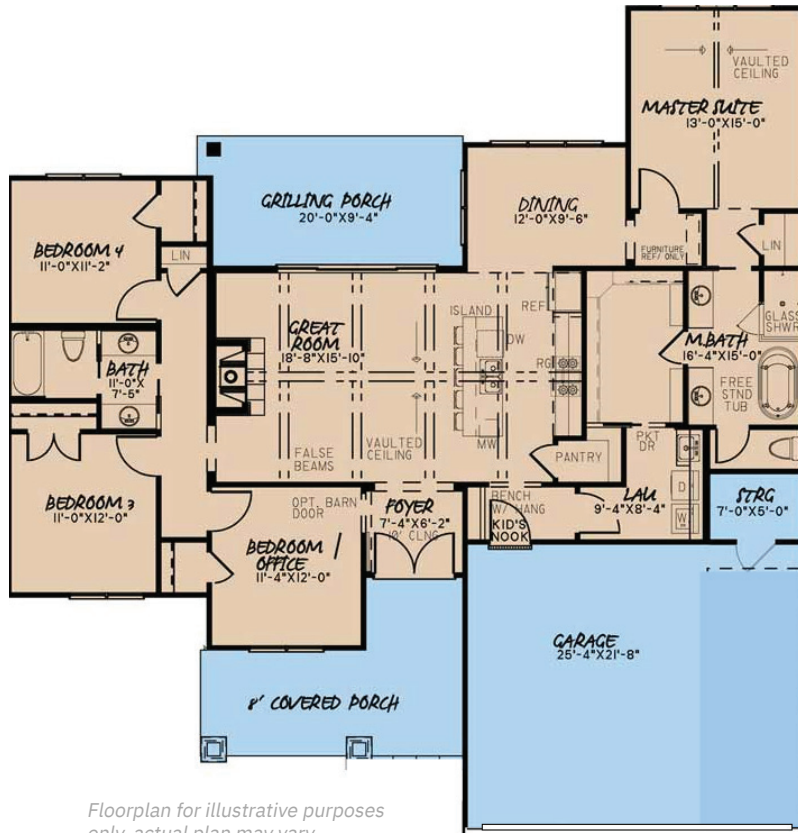
FEATURES INCLUDE:

- 4 bedrooms / 2 bathrooms / 2 car garage
- 1,992 square feet
- With a vaulted great room that is open to the dining and kitchen this home is made for families
- Large and secluded master suite with large master closet, dual vanities, freestanding tub and oversized walk in shower
- Plenty of storage space throughout the home
- Large front and rear porches
- Oversized garage



Renderings may show modified designs.

GRAND CRAFTSMAN 1897



Floorplan for illustrative purposes only, actual plan may vary.

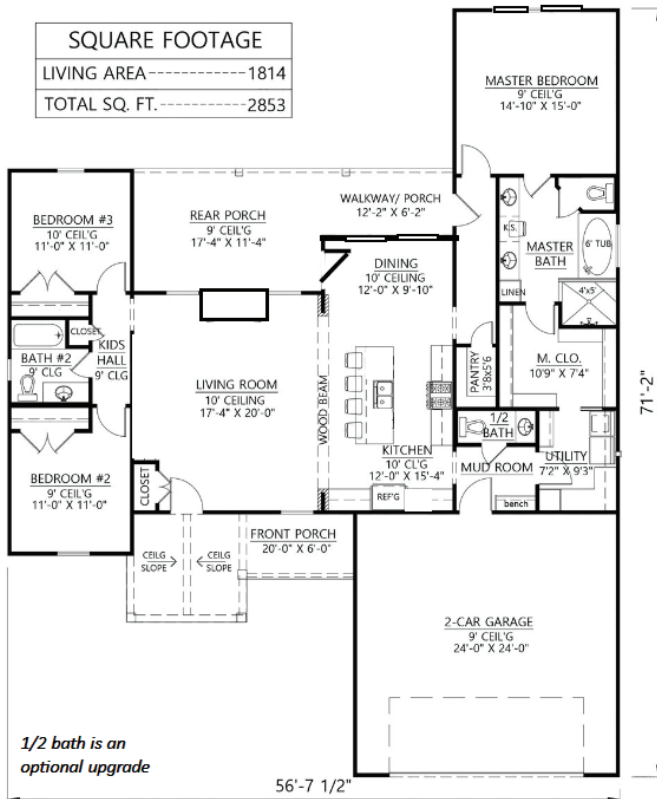
FEATURES INCLUDE:

- 4 bedrooms / 2 bathrooms / 2 car garage
- 1,897 square feet
- With a vaulted great room that spans from kitchen to living, this home feels especially grand.
- Large master suite with dual vanities, free standing tub and walk in shower
- Master closet connects to the laundry for easy living
- Features four bedrooms with a double vanity secondary bath
- Large and inviting front porch and a back porch with room for table, chairs and a big ole grill.



Renderings may show modified designs.

THE ORIGINAL FARMHOUSE 1814



Floorplan for illustrative purposes only, actual plan may vary.

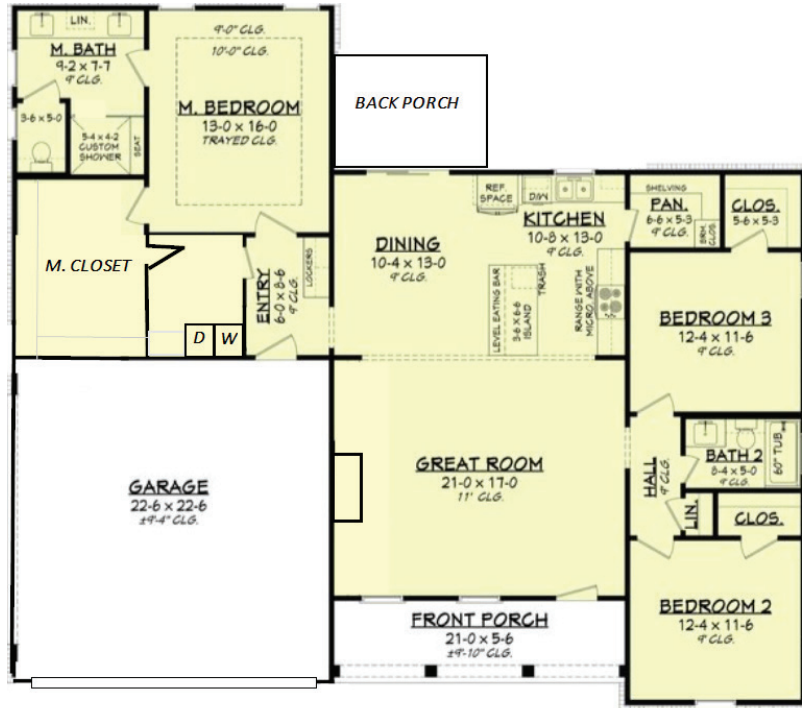
FEATURES INCLUDE:

- 3 bedrooms / 2 or 2.5 bathrooms / 2 car garage
- 1,814 square feet
- With a vaulted front porch and oversized back patio, this home has outdoor space galore
- Large great room with ample kitchen cabinet space
- Master suite with freestanding tub and large walk in shower
- Secondary bedrooms on opposing side of the house
- Oversized garage, perfect for Texas size vehicles large windows and tall ceilings
- Great curb appeal with high peaked roofline



Renderings may show modified designs.

TRUE TEXAS FARMHOUSE 1745



Floorplan for illustrative purposes only, actual plan may vary.

FEATURES INCLUDE:

- 3 bedrooms / 2 bathrooms / 2 car garage
- 1,747 square feet
- Soaring 11' ceilings in the great room with modern electric fireplace makes for a perfect gathering place
- Island kitchen with sink overlooking the back patio to watch the family play outside
- Master suite has oversized shower and dual vanities
- Master closet and laundry room connect to make for easy living
- Front porch that spans the entirety of the great room, perfect for a rocking chair and a glass of iced tea.



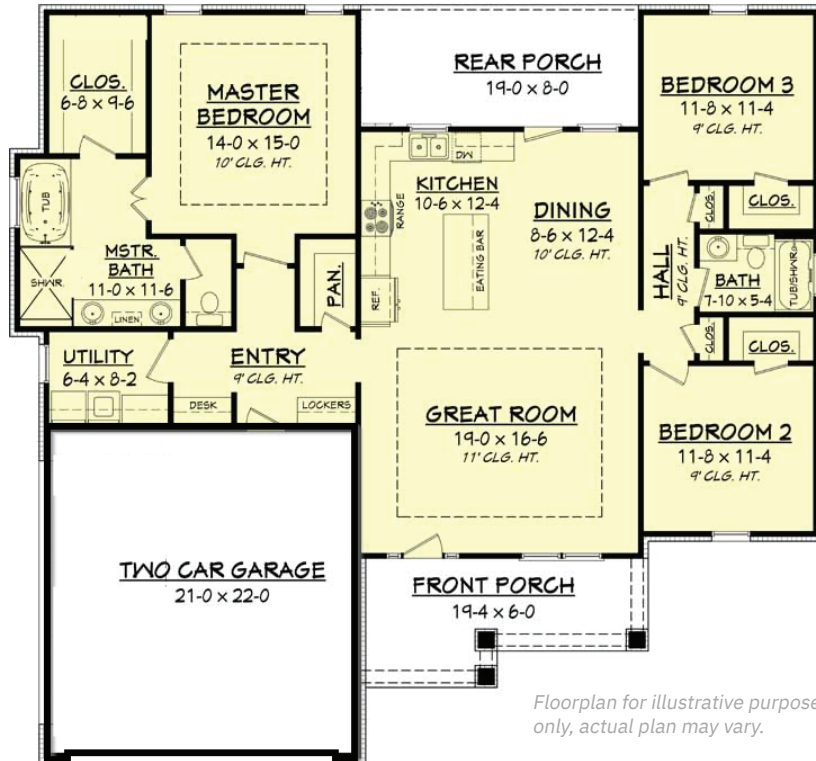
Renderings may show modified designs.

TRUE TEXAS CRAFTSMAN 1657



FEATURES INCLUDE:

- 3 bedrooms / 2 bathrooms / 2 car garage
- 1,657 square feet
- Kitchen Features Large Dining Island and Floating Shelves
- Great Room With Recessed Ceiling and Stained Beam
- Master Suite Features Recessed Ceiling, Oversized Dual Vanities, Oversized Shower and Freestanding Tub
- Large Porches to Enjoy Your Texas Evenings, or Mornings
- Open Concept Great Room, Recessed Living with Stained Beams and a Ton of Character.
- Don't let its size fool you, with its oversized porches and large master suite, it's a home for the family and for entertaining friends.



Floorplan for illustrative purposes only, actual plan may vary.



Renderings may show modified designs.